

# woodbridge

TECHNOLOGY CENTER



Woodbridge Technology Center

Suite 902

**115,656 RSF Office Space**

**32901 Weyerhaeuser Way S**

Coby Holley | [cholley@irgra.com](mailto:cholley@irgra.com) | (503) 403-8057

## PROPERTY INFORMATION

**Ample parking:** 4/1000 ratio

**Ceiling heights:** 9'6" (Office) - 9' (Lab)

**Windows:** Floor-to-ceiling glass window walls  
of 4' x 12' panes

**HVAC:** Two unit supply air fan system with  
re-heat in each office area

**Chillers:** Two 600-ton chillers, one 300-ton  
chiller (centrifugal)

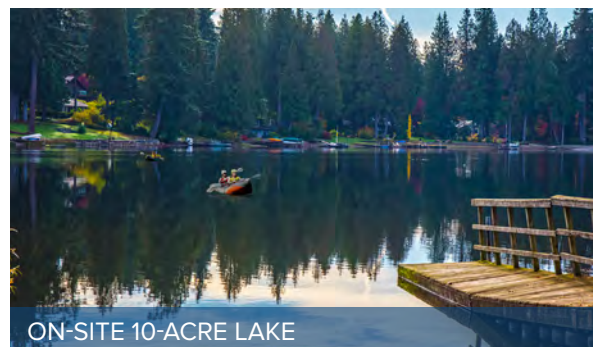
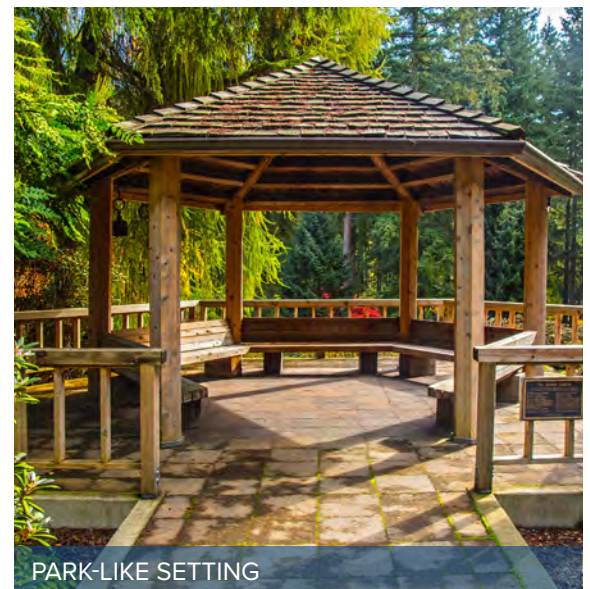
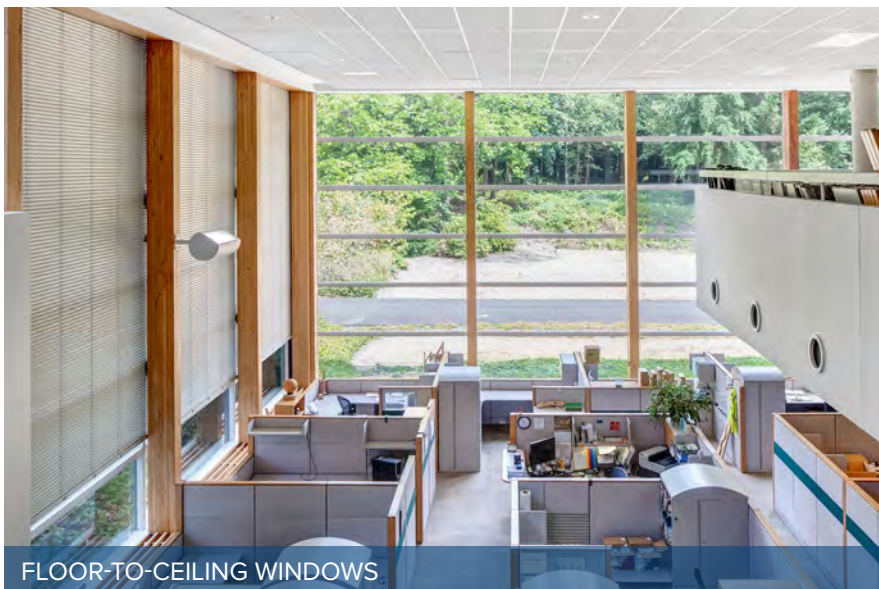
**Boilers:** One 600HP/25 MM BTU/hour  
One 300HP/12.5MM BTU/hour

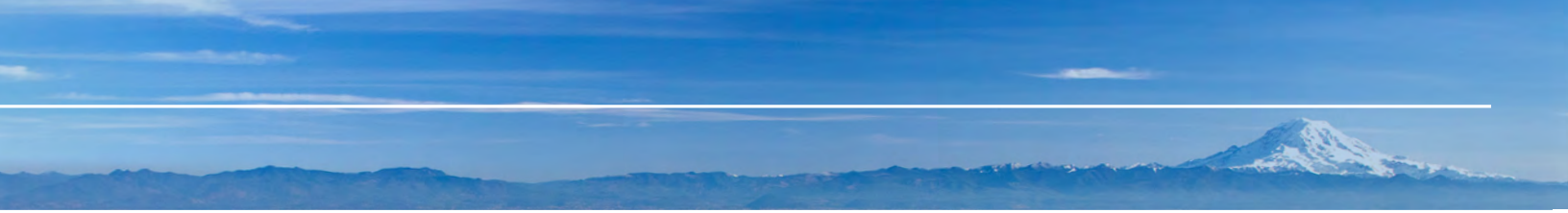
**Electrical:** Six 1,500KVA 12,470v - 227/480V  
One 2,500KVA 12,470v - 1,386/2,400V

**Reserve Electrical:** One 1,250 KVA generator

**Sprinklers:** Fully sprinklered; wet/dry, one electric  
fire pump, one diesel fire pump

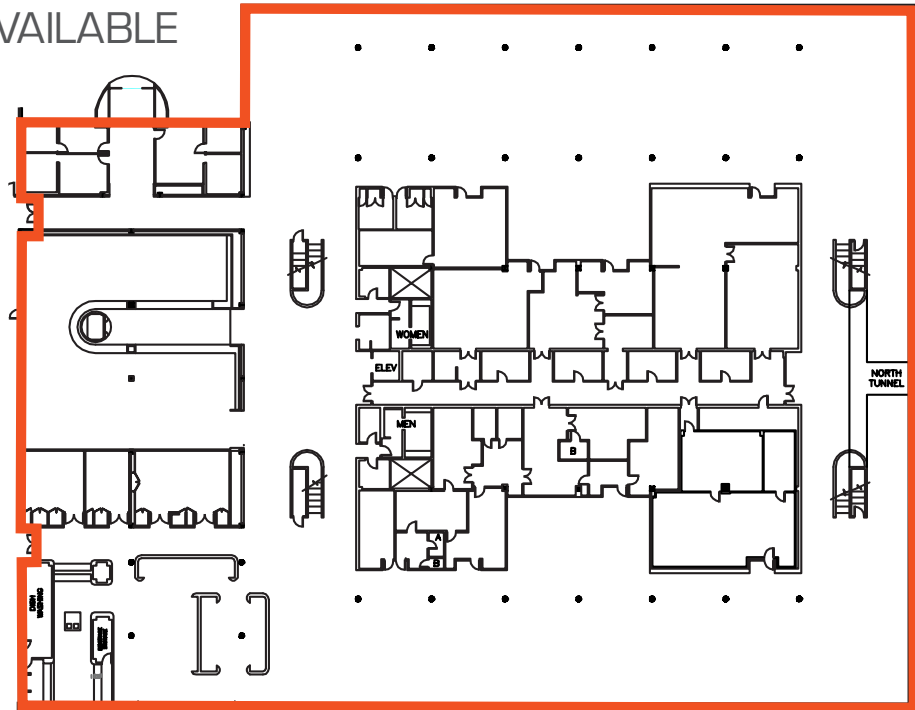
## PROPERTY HIGHLIGHTS



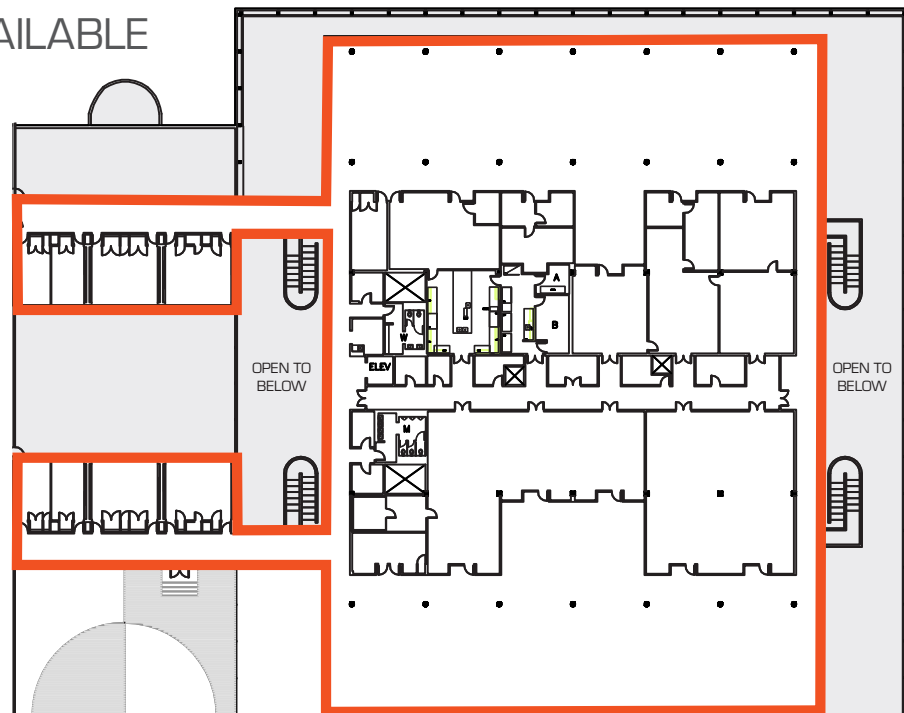


# TOTAL AVAILABLE 115,656 RSF

1ST FLOOR  
64,487 RSF AVAILABLE



2ND FLOOR  
51,169 RSF AVAILABLE





18

EAST TO AUBURN

NORTH LAKE

**woodbridge**  
TECHNOLOGY CENTER

INTERSTATE  
5



PARK AND RIDE



TRANSIT CENTER

