

For Lease > 440,606 SF

# woodbridge

CORPORATE PARK

33815 & 33855 Weyerhaeuser Way S · Federal Way, WA

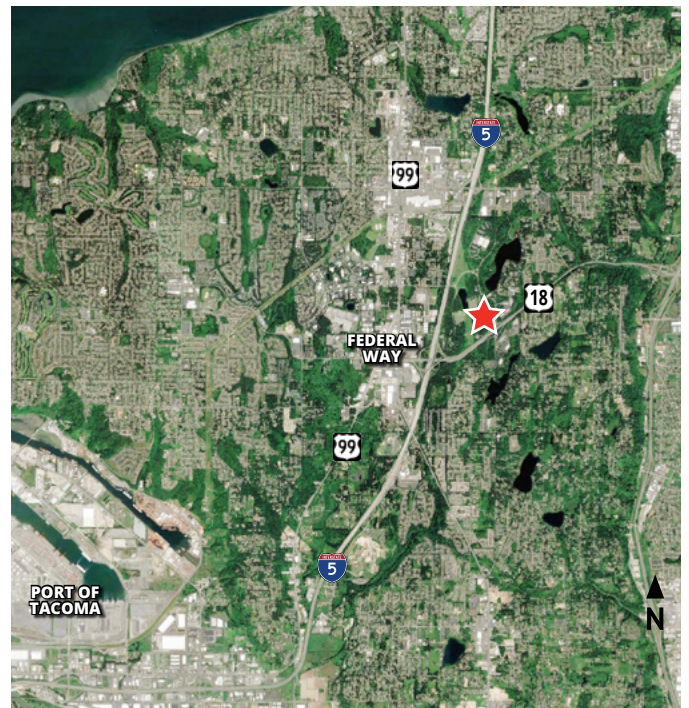


## FEATURES

- » Building A: 226,340 SF; Building B: 214,266 SF (divisible)
- » Building A office: 4,198 SF; Building B office: 4,198 SF
- » Concrete tilt construction
- » 32' clear height
- » Dock-high and grade-level loading
- » LED warehouse lighting
- » ESFR sprinkler system

## LOCATION

- » Park-like corporate campus setting
- » 32+ acre site includes access to walking trails, North Lake and multiple open space areas across the property
- » Easy access to Interstate 5, Highway 18 and Highway 99
- » Approximately 14 miles to Sea-Tac International Airport
- » Less than 10 miles to the Port of Tacoma
- » Located outside of the 100-year floodplain



MATT MCGREGOR, SIOR  
+1 206 624 7401  
matt.mcgregor@colliers.com

BILL CONDON, SIOR  
+1 206 235 9732  
bill.condon@colliers.com

COLLIERS  
601 Union Street, Suite 5300  
Seattle, WA 98101  
www.colliers.com

# woodbridge

C O R P O R A T E P A R K

33815 & 33855 Weyerhaeuser Way S · Federal Way, WA

Colliers



## BUILDING A

33815 Weyerhaeuser Way S | Federal Way, WA

### SIZE

226,340 SF

### OFFICE

4,198 SF  
(not yet constructed)

### CLEAR HEIGHT

32'

### SPRINKLER

ESFR system

### POWER

4,000 amps 227/480 volt

### LIGHTING

LED warehouse lighting,  
15' candles measured  
36" above the floor

### LOADING

35 dock-high doors  
17 dock levelers  
2 grade-level doors

### BLDG. DIMENSIONS

320' x 685'

### COLUMN SPACING

50' x 50' typical

### TRUCK COURT

130'-185' truck court  
with concrete apron

### PARKING

± 255 auto parking stalls  
± 30 trailer parking stalls

## BUILDING B

33855 Weyerhaeuser Way S | Federal Way, WA

### SIZE

214,266 SF

### OFFICE

4,198 SF  
(not yet constructed)

### CLEAR HEIGHT

32'

### SPRINKLER

ESFR system

### POWER

3 phase 227/480 volt

### LIGHTING

LED warehouse lighting,  
15' candles measured  
36" above the floor

### LOADING

35 dock-high doors  
17 dock levelers  
2 grade-level doors

### BLDG. DIMENSIONS

310' X 679.5'

### COLUMN SPACING

50' x 50' typical

### TRUCK COURT

130' truck court with  
concrete apron

### PARKING

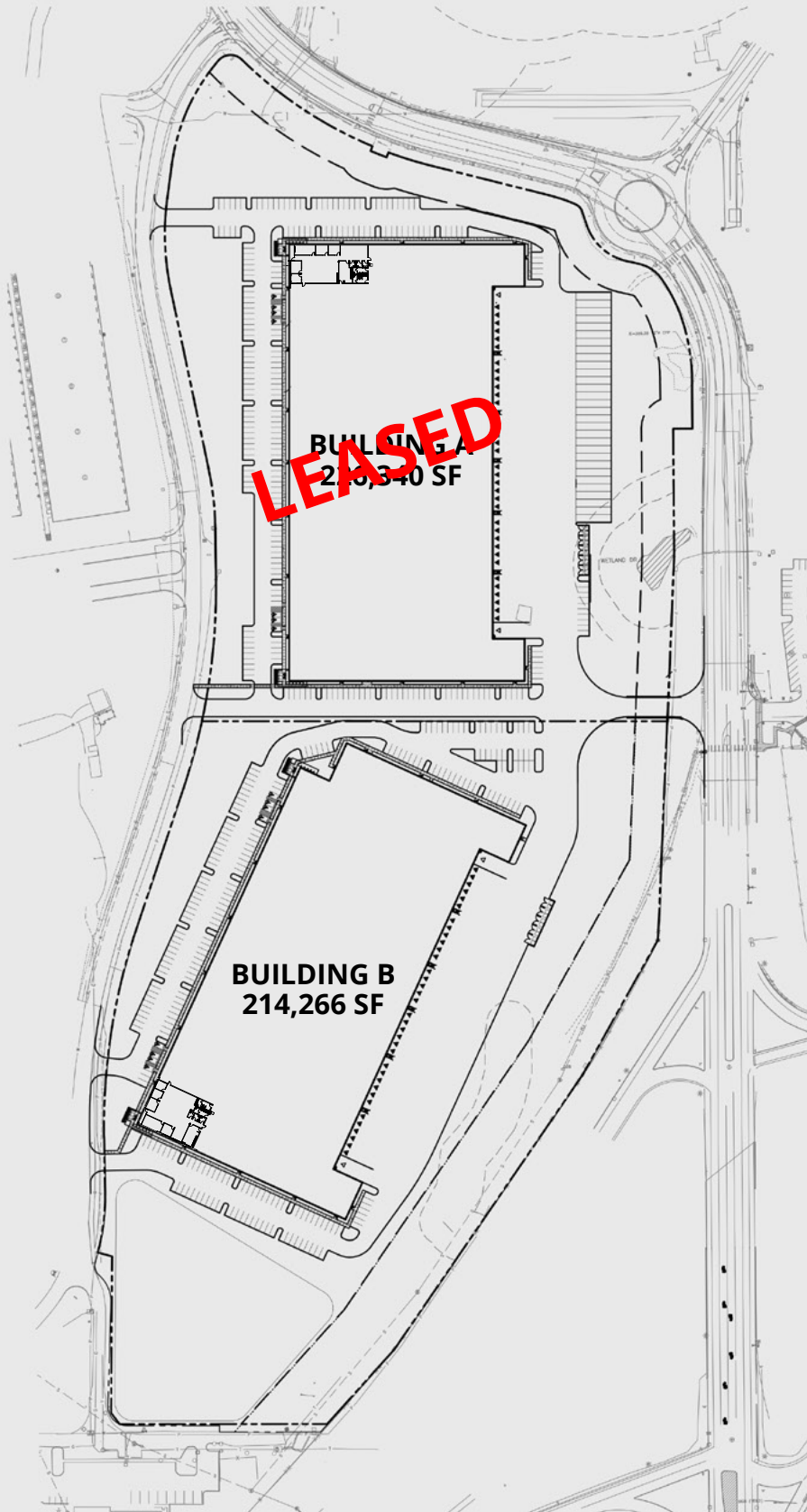
± 249 auto parking stalls

**LEASED**

# woodbridge

CORPORATE PARK

33815 & 33855 Weyerhaeuser Way S · Federal Way, WA



**LEASED**  
BUILDING A  
216,340 SF

BUILDING B  
214,266 SF

▲ DOCK-HIGH DOOR  
△ GRADE-LEVEL DOOR

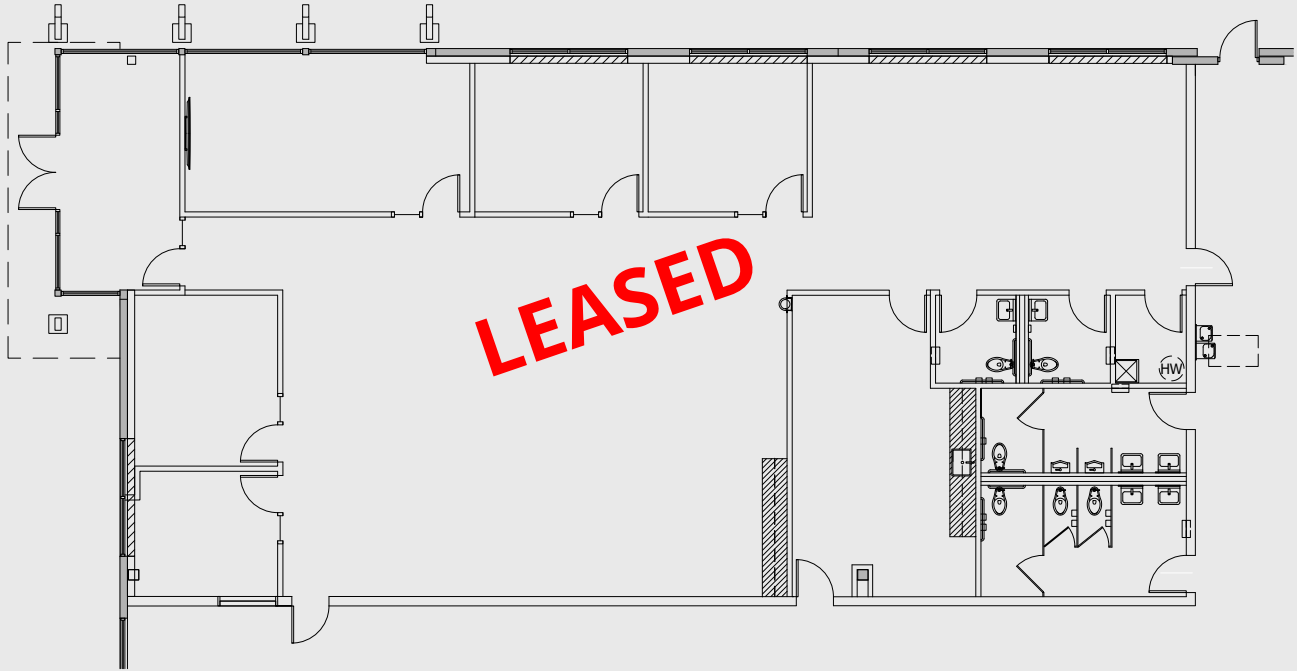


# woodbridge

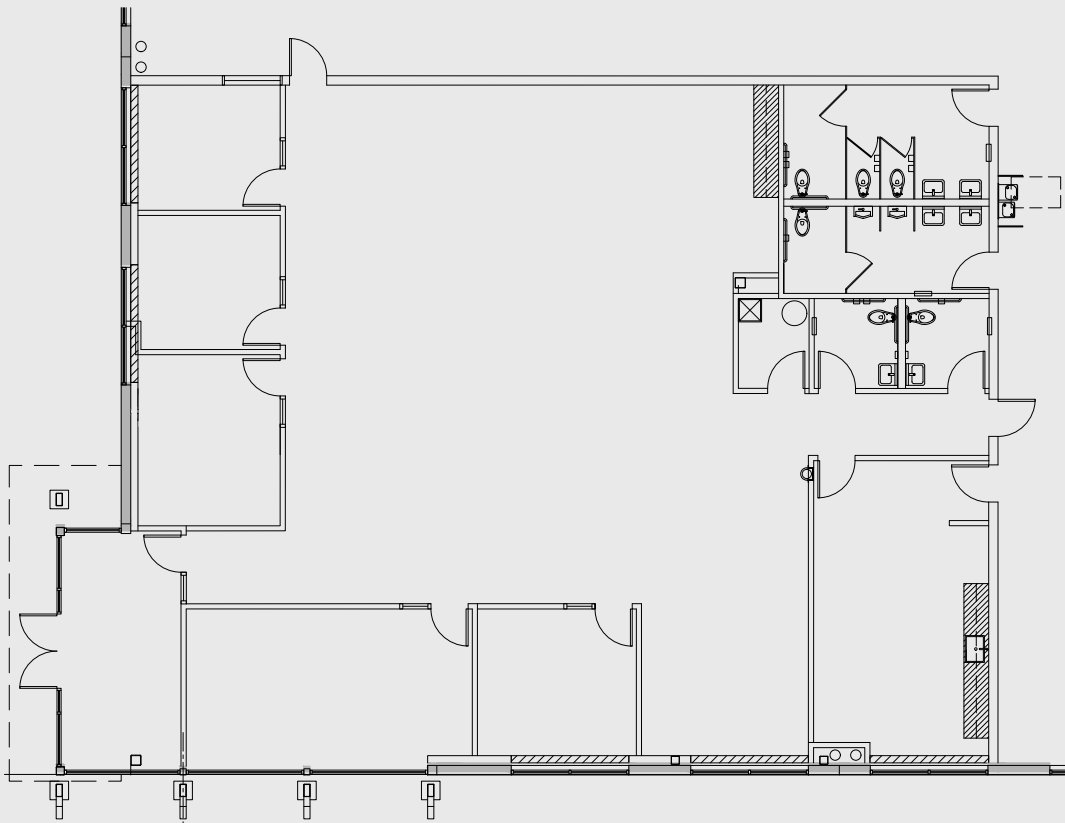
CORPORATE PARK

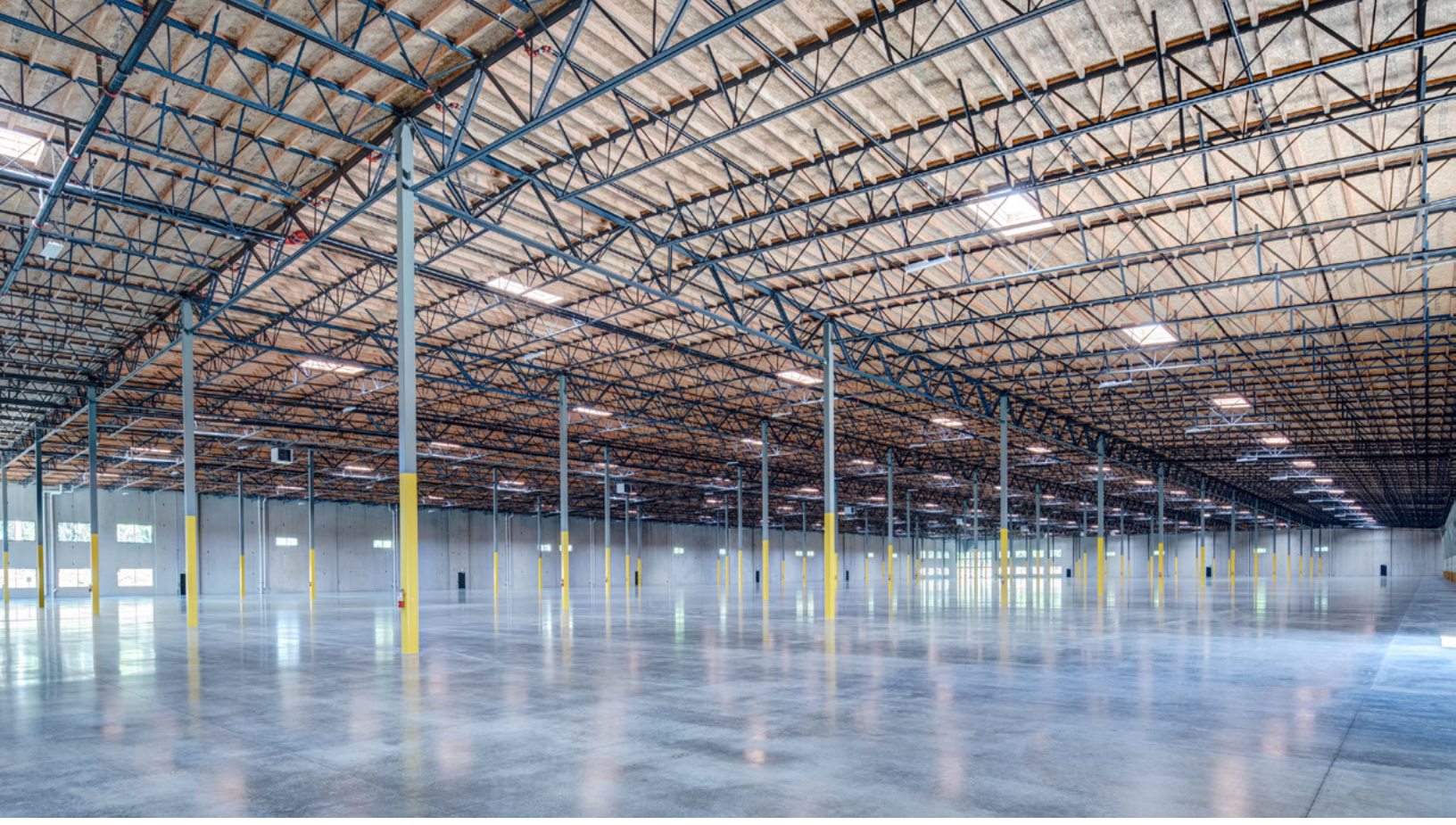
33815 & 33855 Weyerhaeuser Way S · Federal Way, WA

## BUILDING A OFFICE PLAN—4,198 SF



## BUILDING B OFFICE PLAN—4,198 SF





Nature blends with function to create a unique working environment at Woodbridge Corporate Park. Located on 32+ acres minutes from the State Route 18 exit of Interstate 5 in southern King County, this diverse complex offers ultra-modern, newly built industrial space in a park-like setting. Walking and biking trails bisect the campus, combining with open space to support recreation, wellness activities and easy interaction between Woodbridge Corporate Park's industrial, office and technology components. Shopping, dining and entertainment can be found a few miles away at Federal Way Commons and Federal Way Crossings, while peaceful reflection is available at the adjacent Rhododendron Species Botanical Garden. Seattle, Bellevue and other Puget Sound destinations are accessible either via highway or nearby public transit at the Federal Way Transit Center.



MATT MCGREGOR, SIOR  
+1 206 624 7401  
[matt.mcgregor@colliers.com](mailto:matt.mcgregor@colliers.com)

BILL CONDON, SIOR  
+1 206 235 9732  
[bill.condon@colliers.com](mailto:bill.condon@colliers.com)

COLLIERS  
601 Union Street  
Suite 5300  
Seattle, WA 98101  
[www.colliers.com](http://www.colliers.com)